



# Heaters

*ECFA range*



# The innovation as an attitude

## *The company*

**Ineltec** is a company with more than 30 years of experience in the sector and 10.000 equipment installed all around the world. Our achievements are due to the ability of offering customized solutions to perform any kind of test.

*“Technology, research and innovation are the basis for creating equipment of high reliability.”*



# Model

Heaters of the  
ECFA line.



Heaters of the ECFA series  
have several volumes.

# Modelo

Heaters  
ECFA range / INELTEC

## *Description of the equipment*

Heaters of the ECFA range for thermal tests at high temperatures.

The maximum temperature ranges in standards models are from ambient +10°C to +250°C.

We also design customized equipment according to specifications, modifying or widening standard features.

Heaters are used in all industrial sectors because they meet with thermal tests standards for any product or material.

## Volumes

- 01 45 liters
- 02 80 liters
- 03 135 liters
- 04 250 liters
- 05 425 liters
- 06 635 liters
- 07 Other volumes under request



# Features of the equipment

*construction*



01

## 01/ Interior-Exterior

The interior is made of stainless steel and the exterior made of aluminium sheet lacquered in white.



02

## 02/ Mobility

The machine provides 4 multidirectional wheels with brake devices.



03

## 03/ Access holes

Climatic chambers have access holes for putting the electrical wiring or the calibration probe.



04

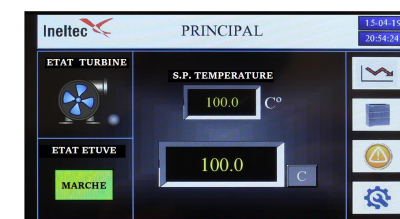
## 04/ Trays

It is included 2 sample holder trays that are adjustable in its height and that are able to stand up to 50Kg.

05

## 05/ Control system

The touch screen PC comes with a control software that is simple and intuitive and allows the programming, acquisition, recording and controlling of all the variables.



# Features of the equipment

## Standard functions

Model ECFA	Temperature	Dimensions AxAxP (mm)	Dimensions AxAxP (mm)	Aprox. weight
Vol. Liters	Ambient +10°C	Interior	Exterior	Kg.
	+250°C			
45	*	330 x 470 x 280	645 x 665 x 480	60
80	*	500 x 450 x 350	810 x 640 x 550	70
135	*	500 x 600 x 450	810 x 790 x 650	100
250	*	800 x 600 x 520	1120 x 750 x 760	±180
425	*	1000 x 800 x 530	1370 x 950 x 800	±210
635	*	1200 x 1000 x 530	1570 x 1150 x 800	±260

# Control system

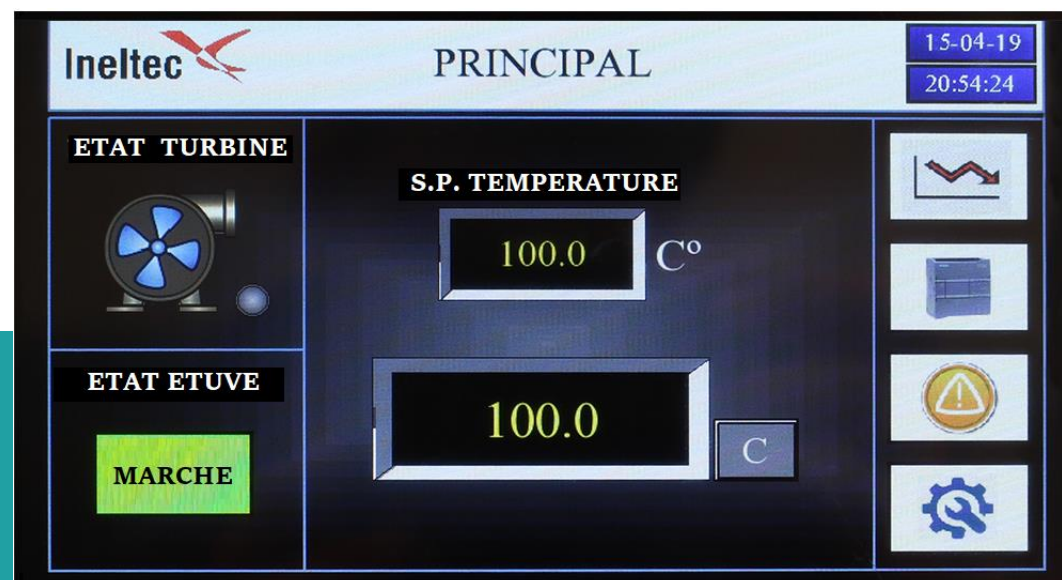
*Touch screen*

Heaters  
ECFA range / INELTEC



## Characteristics

- |                           |                               |
|---------------------------|-------------------------------|
| 01 Temperature alarm      | 03 Connection RS-232 - Option |
| 02 Heat / Cold regulation | 04 Connection RS-485 - Option |



# Special heaters

Heaters  
ECFA range / INELTEC

Some examples done



1000L



1500L



Heaters with rails





# Sectors



Aerospace,  
Aeronautical,  
Automotive,  
Railway,  
Naval

Construction,  
Luminary,  
Wood,  
Cork,  
Glass,  
Coating,  
Wiring,  
Ceramics

Pharmaceutical,  
Cosmetic,  
Veterinarian,  
Food industry

Plastic,  
Chemical,  
Petroleum,  
Carton,  
Paper,  
Rubber

Biologic,  
Biotechnologies,  
Agrobiologic,  
Insects

R+D,  
Technological  
centers,  
Universities,  
Laboratories

Electronic,  
Appliances,  
Telecommu-  
nications,  
Mechanical  
constructions,  
Metallurgic

Defense,  
Armament

Mineral  
Ironwork,  
Galvanic,  
Metallurgic

Textile

# Standards

DIN	EN	UNE	NF	ICH	FDA	ISO	ASTM	MIL	STD	VDA
IEC	BS	VG	IRAM	ETS	Telcordia	ECSS	RTCA	TR	SAE	UL
GR	NTS	ETSI	NEBS	NCh	SEMI	AS	NZS	ANSI	NMX	IRAM
ABNT	UNIT	INTN	NTP	...						

# International presence



# Range of products

Heaters  
ECFA range/ INELTEC

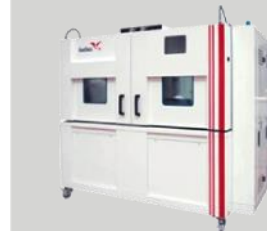
## ES Simulation equipment



Climatic chambers



Modular chambers



Thermal shock



Combined tests



Specials



Stability



Generator groups



Calorimetric



Corrosion - combined



Corrosion



Frost / Defrost



Tightness – rain



Tightness – air/wind



Freezer cabinet



Thermostatic bath



Furnace



Heating

# Range of products

Heaters  
ECFA range/ INELTEC

## BE Testing bench



Fatigue endurance



Characterization



Pulsing pressure



Rupture



Bursting



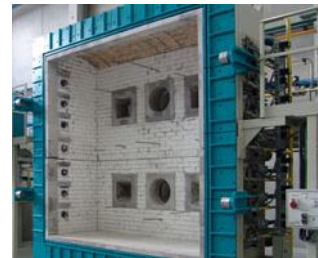
Liquid Thermal Shock



Standardization



Resistance to the fire - I



Resistance to the fire - II



Reaction to the fire - I



Reaction to the fire - II

## MC Measurement and control



Artificial vision - I



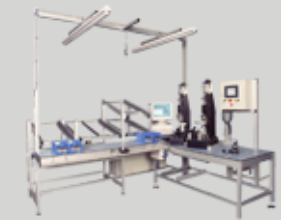
Artificial vision - II



Artificial vision - III



End of line control - I



End of line control - II



**Ineltec**  
Spain / Barcelona  
Headquarters



C/ Metal·lúrgia, 8  
Pol. Ind. Les Goules  
08551 Tona



T/ 0034 938 605 100  
F/ 0034 938 717 463



[ineltec@ineltec.es](mailto:ineltec@ineltec.es)  
[www.ineltec.es](http://www.ineltec.es)

**Follow us**  
on our  
social networks



[twitter](#)



[Blog](#)